



NAN GOU LAFLORID  
 PI BON PRATIK JESYON  
 POU PWOTEKSYON RESOUS DLO  
 SELON ENDISTRI VÈT YO



ENDISTRI VÈ, PI BON PRATIK (GI-BMP)

**MODIL 6: PESTISID**

9/2014

---

---

---

---

---

---

---

---



**OBJEKTIF FÒMASYON AN**

Nan fen modil sa ou pral kapab :

1. Dekri lwa ak lisans ki kontwole aplikasyon pestisid.
2. Eksplike konsèp entegre Jesyon Ensèk nwizib.
3. Eksplike danje ki nan anviwònman an ki gen pou wè ak aplikasyon pestisid.
4. Entèprete epi aplike enfòmasyon ki sou etikèt pestisid yo.
5. Minimize risk sante lè w ap itilize pestisid.

---

---

---

---

---

---

---

---



LWA AK LISANS KI KONTRWOLE  
 APLIKASYON PESTISID

---

---

---

---

---

---

---

---



**DEPATMAN AGRIKILT I AK SÈVIS  
KONSOMATÈ ETA FLORID**

**FDACS**

Sa se regilasyon ajans Eta ki responsab pou administre lwa leta yo ki gouvène pestisid ak lisans angrè nan Florida.

---

---

---

---

---

---

---

---



**FDACS: OTORITE LEGAL**



**Chapit 482**

Estrikti Ak Florida Kont Pès

- Operatè kontwòl kont pès komèsyal
- Endistri antretyen Jaden komèsyal
- Anplwaye leta ak prive, oswa pwopriyetè

**Chapit 487**

Lwa Laflorid pou pestisid

- Restriksyon sou itilizasyon ak sipèvizyon pestisid

---

---

---

---

---

---

---

---



**FDACS: BIWO ADMINISTRASYON**

Biwo Lisans ak Ranfòsman  
(Chapit 482) ki gen rapò Zòn vil yo

- Operatè kontwòl pès (PCO)
- Antretyen Jaden Komèsyal limite
- Gazon ak plant dekoratif limite
- Aplikatè iben angrè komèsyal limite

(Chapit 487) "Restriksyon sou izaj PESTISID "

- Prive – Fèmnye yo ak kiltivatè pepinyè yo
- Komèsyal – Aplikasyon sou kontra oswa anbochman
- Piblik – anplwaye gouvènman oswa anplwaye enstitisyonèl

---

---

---


---

---

---

---

---

|  LISANS PESTISID: APLIKATÈ |  |
|---|--|
| Operatè kontwòl pès<br>(Gazon oswa dekoratif)   | <ul style="list-style-type: none"> <li>Fè kontwòl kont pès sou òneman ak gazonyo.</li> <li>Titilè Kat ID a.</li> </ul>   |
| Antretyen Jaden Komèsyal limite   | <ul style="list-style-type: none"> <li>Pèsonèl antretyen jaden komèsyal ki aplike sèten pestisid sou kabann plant ak plant dekoratif sèlman, tankou glifosat.</li> </ul> |
| Gazon ak plant dekoratif limite<br>(Anplwaye enstitisyonèl)   | <ul style="list-style-type: none"> <li>Gouvènman, anplwaye lekòl ak pèsonèl nan konndo, biznis ki aplike pestisid sou pwopriyete biznis yo.</li> </ul>                   |
| Gazon ak Plant dekoratif<br>(Chapter 487)   | <ul style="list-style-type: none"> <li>Moun ki aplike oswa sipèvize izaj RUP pestisid; pestisid ki pa iben yo.</li> </ul>  |

---

---

---

---

---


---

---

---

---

---

|  SIPÈVIZYON APLIKASYON |  |
|---|--|
| Operatè kontwòl pès<br>(Biznis Operasyon)   | <ul style="list-style-type: none"> <li>Sipèvize nimewo san limit anplwaye ki pa sètifye ak kat idantifikasyon.</li> </ul>                            |
| Antretyen Jaden Komèsyal limite   | <ul style="list-style-type: none"> <li>Yo pa gen dwa sipèvize aplikasyon pestisid ki fèt nan men moun ki pa sètifye, anplwaye san lisans.</li> </ul> |
| Gazon ak plant dekoratif limite   | <ul style="list-style-type: none"> <li>Yo pa gen dwa sipèvize aplikasyon pestisid ki fèt nan men moun ki pa sètifye, anplwaye san lisans.</li> </ul> |
| Òneman ak gazon<br>(Chapit 487)   | <ul style="list-style-type: none"> <li>Sipèvizyon jiska 15 aplikatè.</li> <li>Dwe disponib imedyatman pa vwa, telefòn oswa radyo.</li> </ul>         |

---

---

---

---

---



---

---

---

---

---

|  SI W PA GEN LISANS...   |   |
|---|---|
| <p><b>Li ilegal pou aplike nenpòt ki pestisid komèsyalman nan yon gazon, sit rezidansyèl, oswa lòt sit estriktirèl san lisans</b></p>   |  |
| <p><b>Aplikatè komèsyal:</b></p> <ul style="list-style-type: none"> <li>- Sivil jiska \$ 5,000 amann</li> <li>- Kriminèl jiska \$ 25,000 amann</li> <li>- Tan prizon posib</li> </ul> |   |
| <p>Ki gen ladan aplikasyon an:</p> <ul style="list-style-type: none"> <li>✓ "raje ak manje"</li> <li>✓ "ensèk-kontwòl"</li> </ul>   |   |

---

---

---

---

---

---

---

---

---

---



### JESYON ENSÈK NWIZIB

---

---

---

---

---

---

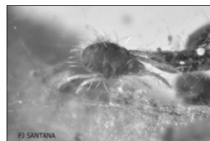
---

---



### KI SA KI SE YON ENSÈK NWIZIB?

Mwens pase 1% nan tout ensèk yo poze danje pou plant!



1



2



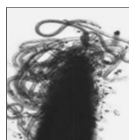
3



4



5



6

---

---

---

---

---

---

---

---



### JESYON ENTEGRE ENSÈK NWIZIB

**(IPM) Integrated Pest Management** Jesyon entegre Ensèk nwizib se izaj kowòdone ensèk nwizib ak enfòmasyon nan anviwònman an ak metòd ki disponib pou kontwòl kont pès:



- **Prevansyon:** kenbe ensèk nwizib yo pou yo pa vin tounen yon pwoblèm.
- **Anpeche:** diminye ensèk nwizib ak domaj ak mwayen ki pi ekonomi vle di ak pi piti danje posib pou moun, pwopriyete ak anviwònman an

---

---

---

---

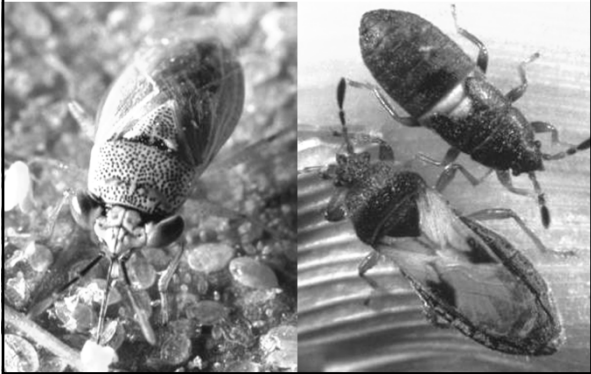
---

---

---

---

 ETAP 1. IDANTIFIKASYON EGZAT



---

---

---


---

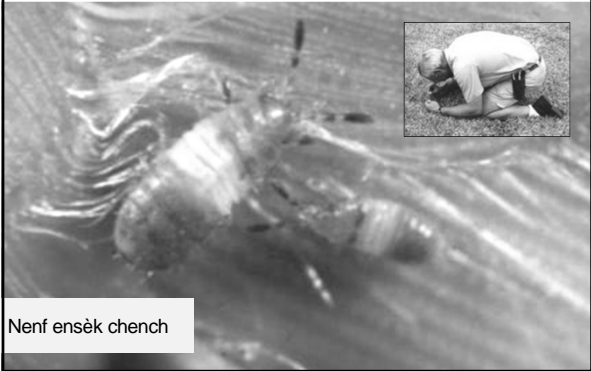
---

---

---

---

 2. KONTWOLE POPILASYON ENSÈK  
NWIZIB LA



Nenf ensèk chench

---

---

---

---

---

---

---

---

 3. EDIKE KLIYAN YO SOU TRETMAN

Reyalis papòt aksidan:

- ✓ Estetik
- ✓ Sante Plant
- ✓ Distribisyon
- ✓ Estrateji kontwòl



---

---

---

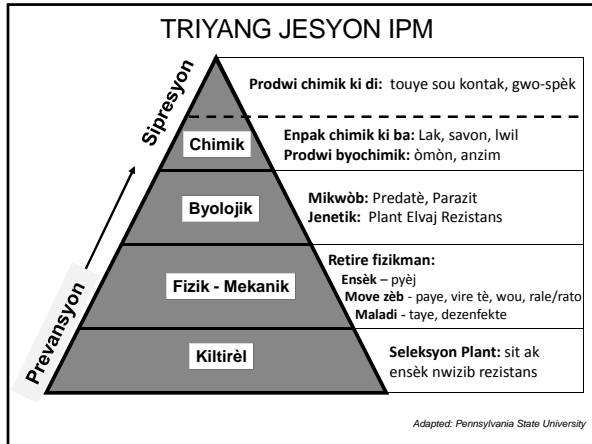
---

---

---

---

---




---

---

---

---

---

---

---

---

### RÈS LIS POU TCHEKE SIVEYANS

- Èske **idantifikasyon** ensèk nwizib yo kòrèk?
- Èske **metòd** kontwòl ensèk nwizib yo kòrèk?
- Èske modèl **aplikasyon** an kòrèk?
- Èske **pousantaj la/To a** te apwopriye?
- Èske **orè/distribisyon** an te kòrèk?
- Èske ensèk nwizib yo te **rezistan**?

---

---

---

---

---

---

---

---

### KI JAN BIZNIS KI BAZE SOU WOUT SÈVI AK IPM

- Edike kliyan yo sou defo ki akseptab
- Siveye lakou ak katye pou potansyèl pwoblèm
- Kenbe dosye – make pwoblèm ki te poze nan dènye ane yo
- Idantifye ka espesyal yo

---

---

---

---

---

---

---

---



 ENKYETID POU ANVIWONMAN

---

---

---

---

---

---

---

---



Ki jan pestisid ka afekte kalite dlo?

---

---

---

---

---

---

---

---

 PWOTEJE DLO ANLÈ AK ANBA TÈ YO

- Idantifye kalite tè yo ak jeyoloji zòn nan
- pa aplike pestisid a sifas pave oubyen kote lap koule tou pre tanpèt
- Wouze pwodwi yo selon chak enstriksyon ki sou etikèt yo, men PA wouze twòp
- PA aplike pestisid anvan yon gwo lapli



Photo: G. Hochmuth (Gainesville, FL)

---

---

---

---

---

---

---

---

 PWOTEJE ÒGANIS KI PA SIBLE YO

- Timoun yo
- Zanimò domestik yo
- Moun ki sansib yo
- ensèk itil yo
- Bèt sovaj yo
- Plant dezirab yo




---

---

---

---

---

---

---

---

 FLOTE NAN LÈ A: MOUVMAN PESTISID

| Dyamèt gout yo nan mikron | Non gout yo  | Tan ki nesèsè pou tonbe 10 ft. in (pye.pous) nan lè | Distans ki kouvri pandan l'ap tonbe 10 ft. in 3 mph briz |
|---------------------------|--------------|---|--|
| 5                         | Bwouya       | 66 minit  | 3 miles (4.5 kilomè)                                     |
| 100                       | Vapè dlo     | 10 segond   | 409 pye  |
| 500                       | Ti lapli     | 1.5 segond  | 7 pye  |
| 1000                      | Lapli modere | 1 segond  | 4.7 pye  |

---

---

---

---

---

---

---

---



 ETIKÈT PESTISID

---

---

---

---

---

---

---

---





## ETIKÈT PESTISID LA

ETIKÈT LA SE LALWA!



---

---

---

---

---

---

---

---



## ENFÒMASYON SOU ETIKÈT PESTISID

- Engredyan ak fòmilasyon
- Enstriksyon pou itilize
- Enfòmasyon Depo ak eliminasyon
- Enfòmasyon sou sekirite
- Ekipman pwotektif (PPE)



---

---

---

---

---

---

---

---



## SÈVIS KONNTENÈ

### Pestisid konsantre

- Non, adrès, ak nimewo telefòn nan kabinè avoka kontwòl kont pès
- Non prodwi a
- Nimewo anrejistremant EPA (ki soti nan etikèt ki sou pwodwi a)
- Non ak pousantaj engredyan aktif
- Mo siyal ki soti nan etikèt ki anrejistre

### Preparasyon pou Izaj-dekonsantrasyon (tou pare pou itilize)

- Non, adrès, ak nimewo telefòn nan kabinè avoka kontwòl kont pès
- Non prodwi a, avèk mo "Diluted" devan li
  - Nimewo anrejistremant EPA avèk mo "Derived From" devan li
  - Non ak pousantaj engredyan aktif dekonsantre
  - Mo siyal ki soti nan etikèt ki anrejistre

---

---

---

---

---

---

---

---

## ENFÒMASYON SOU ETIKÈT: MO SIYAL

| Mo Siyal                                  | Kategori               | Dòz oral letal*  |
|---|------------------------|--|
| Danje, Pwazon<br>(Zo bwa Tèt ak zo kwaze) | I. Toksik anpil        | - Kèk gout nan 1 ti kiyè<br>- LD <sub>50</sub> Trace to 50 mg/kg                 |
| Warning/Aviso<br>/Avètisman               | II. Pa two toksik      | - 1 ti kiyè nan 1 oz.<br>- LD <sub>50</sub> 50 rive nan 500 mg/kg                |
| Caution/Prekosyon                         | III. Toksik toupiti    | - 1oz. Rive plis pase yon pent/liv<br>- LD <sub>50</sub> > 500 jiska 5,000 mg/kg |
| Prekosyon<br>(oswa pa gen mo siyal)       | IV. Plizourmwen toksik | - Plis pase yon pent/liv<br>- LD <sub>50</sub> > 5,000+ mg/kg                    |

\*Based on a 150-pound person

---

---

---

---

---

---


---

---

---

---

## DEKLARASYON: GRAV TOKSISITE NAN PO

| Mo siyal  | Deklarasyon tipik  |
|---|--|
| DANJE-PWAZON<br>(zo bwa tèt ak zo kwaze nesèsè)<br> | Li ka lakoz lanmò si li pase nan po kò. Ou p'ap jwenn li nan je, sou po, oswa sou rad. Lave byen avèk savon ak dlo apre ou fin manyen li epi anvan ou manje, bwè, manje chiklèt, oswa sèvi avèk tabak. |
| AVETISMAN   | Li ka lakoz lanmò si li pase nan po kò. Ou p'ap jwenn li nan je, sou po, oswa sou rad. Lave byen avèk savon ak dlo apre ou fin manyen li epi anvan ou manje, bwè, manje chiklèt, oswa sèvi avèk tabak. |
| PREKOSYON   | Danjeresi li pase nan po kò. Evite kontak avèk je, oswa rad. Lave byen avèk savon ak dlo apre ou fin manyen li epi anvan ou manje, bwè, manje chiklèt, oswa sèvi avèk tabak.                           |
| PREKOSYON<br>(Si nesèsè)  | Deklarasyon pa nesèsè. Sepandan, fabrikatè yo ka chwazi itilize etikèt kategori nimewo III.  |

---

---

---

---

---

---

---

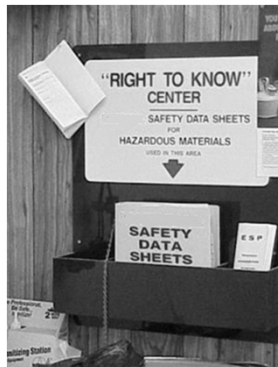
---

---

---

## DONE SEKIRITE (SDS)

- Pwosedi apwopriye pou manyen / travay avèk pwodui chimik
- SDS yo dwe disponib pou tout anplwaye
- Kenbe SDS yo byen òganize epi disponib nan ka ijans
- Yon kopi ta dwe disponib pou biwo/jesyon




---

---

---

---

---

---

---

---

---

---

**GLOBALY HARMONIZED SYSTEM (GHS)  
SISTEM GLOBAL AMONIZE**

- Apati de Mas 2012
- Nouvo sistèm pou klasifikasyon sibstans danjere
- Hazardous Communication System (Sistèm Kominikasyon pou Danje) (HCS)
- Endistri ki fabrike , transpote epi fè depo prodwi chimik
- Sèvis Repons Ijans, Sant pou Kontwòl Pwazon, ak tranpotè machandiz danjere




---

---

---

---

---

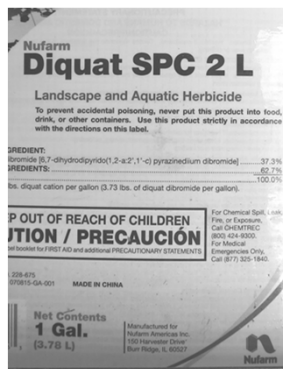
---

---

---

**RESTRIKSYON YO METE SOU ETIKÈT YO**

- Vyolasyon lwa federal yo nan sèvi ak yon pestisid nan yon fason ki pa konsistan ak etikèt li
- Pa aplike pwodwi a nan:
  - o Pi wo döz
  - o Pi wo konsantrasyon
  - o Aplikasyon Sipleman
  - o Pestisid yo kapab itilize sèlman sou plant yo, bèt yo oswa sit ki nan lis ki sou etikèt la




---

---

---

---

---

---

---

---

**EKSEPSYON NAN ETIKÈT LA**

| Sòf si etikèt la entèdi sa, li pa yon pwoblèm pou...           |
|--|
| 1. Sèvi ak pi plis ekipman pwoteksyon pèsonèl pase sa yo mande |
| 2. Sèvi ak ekipman etikèt la pa entèdi                         |
| 3. Melanje ak yon lòt pestisid                                 |
| 4. Melanje ak angrè  |
| 5. Aplike mwens pase to ki make sou etikèt la                  |

---

---

---

---

---

---

---

---



**DIMINYE EKSPOZISYON  
KONTAK PESTISID NAN ZÒN SAN PWOTEKSYON**




---

---

---

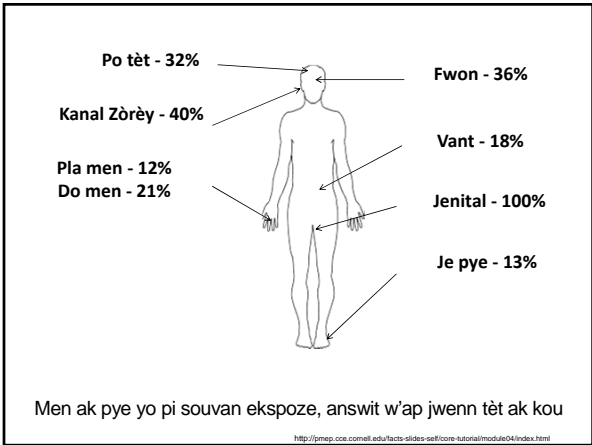
---

---

---

---

---




---

---

---

---

---

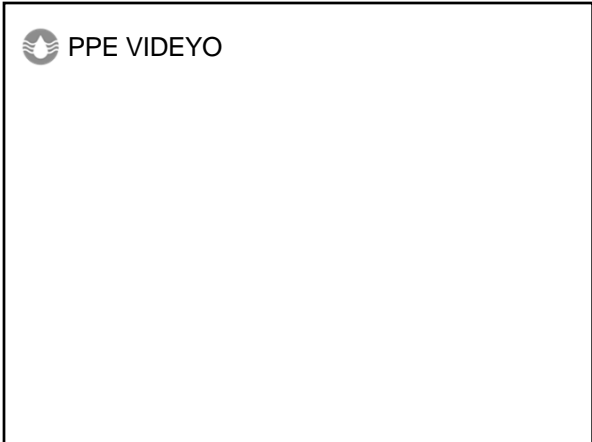
---

---

---



**PPE VIDEYO**




---

---

---

---

---

---

---

---



### MINIMIZE RISK DEPO / MANIPILASYON

- Diminye kantite ki nan men
- Premye antre – Premye soti
- Kenbe yo an sekrite epi izole
- Pôt ki klele
- Pa fimmen nan zòn nan
- Anpeche moun ki pa otorize antre




---

---

---

---

---

---

---

---



### MANIPILASYON CHIMIK

3 kòmandman yo:

- Espere move tan
- Pare pou move tan
- Evite pwoblèm depi anvan yo rive




---

---

---

---

---

---

---

---



### IJANS JESYON DEVÈSMAN PESTISID

- Kontwòle sitiyasyon an
- Kontwòle devèsman an
- Netwaye devèsman an
- Sere gaspiyaj yo kòrèkteman jiskaske yo jete yo




---

---

---

---

---

---

---

---



### STORAGE/HANDLING VIDEO

---

---

---

---

---

---

---

---



### REVIZYON

1. Ki lisans ak lwa ki jere aplikasyon angrè nan Laflorid?
2. Kisa IPM ye?
3. Ki danje pou lasante ak anvivònman ki gen fason nou aplike pestisid?
4. Ki enfòmasyon ki sou etikèt yo?
5. Kijan ou ka minimize risk pou lasante ak anvivònman an lè w'ap itilize pestisid?

---

---

---

---

---

---

---

---

*Pwogram sa a finanse an pati pa FDEP ak Seksyon 319 Pwogram Jesyon Sibvansyon A Sous Divès ki soti nan Ajans pou pwoteksyon Anvivònman peyi Lèzetazini.*

Nou site non kèk komès nan prezantasyon sa a se sèlman pou bay enfòmasyon espesifik. Se pa yon garanti se konsa pwodwi yo rele, epi yo pa siyifi ke yo apwouve esklizyon lòt konpozisyon ki apwopriye. Sèvi ak pestisid yo ak atansyon. Li epi swiv enstriksyon ki sou etikèt fabrikan an.



MÈSI!



---

---

---

---

---

---

---

---